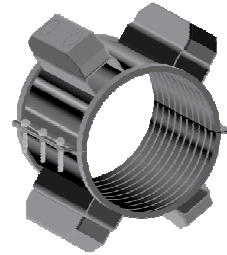




CCI PIPELINE SYSTEMS

Specifications & Certificates of Compliance:
CCI Steel Band Casing Spacer
Model CSC8

The CCI Model CSC8 shall be constructed of circular Carbon Steel bands, which bolt together forming a shell around the carrier pipe. The casing spacer shall be lined with a ribbed PVC extrusion with a retaining section that overlaps the edges of the shell and prevents slippage. The spacer shall be designed with runners and/or risers to support the carrier pipe within the casing and maintain a minimum clearance of 1.0 in. between the casing ID and the carrier pipe OD.



The runners shall be Glass Reinforced Polymer with ends of the runners beveled to facilitate installation over rough weld beads or the weld ends of misaligned or deformed casing pipe. The runners shall be attached to support structures (shell or risers) at appropriate positions to properly support the carrier pipe within the casing and to ease installation. They shall have a minimum length of 7.0 in. and a minimum width of 2.0 in.

The shell shall be manufactured of 8.0 in. wide, Hot Rolled, Pickled, and Oiled 14-gauge Carbon Steel. The riser shall be constructed of Hot Rolled, Pickled, and Oiled 10-gauge Carbon Steel, 6.75 in. minimum lengths with a height to be determined based on the annular space between the carrier pipe OD and the casing ID.

Recommended positioning of the spacers is one placed 1-2 feet on either side of the bell joint and one every 6-8 feet apart thereafter for a total of three casing spacers per joint. CCI engineering reserves the right to recommend spacing according to application.

PHYSICAL PROPERTIES

SHELL and RISERS

Shell – 14-Gauge Hot Rolled, Pickled & Oiled Steel
Risers – 10-Gauge Hot Rolled, Pickled & Oiled Steel

FINISH

Copolymer-Based Thermoplastic Coating
Adhesion: ASTM D 4541 = >1,000 psi
Hardness: Durometer Shore 'D' = 53
Maximum Operating Temperature (Constant): 150°F (65°C)

RUNNERS

2" Wide Glass Reinforced Polymer
Length: 7" (177.8 mm) Minimum
Tensile Strength: ASTM D 638 27.0 kpsi
Compressive Strength: ASTM D 695 33.0 kpsi
Flexural Strength: ASTM D 790 40 kpsi
Izod Impact @ 73°F (23°C): 11 kJ/m²
Melting Point: ASTM D 3418 504°F (263°C)

LINER – PVC (EPDM Alternate)

Thickness: .090" (2.29mm) Minimum
Hardness: ASTM D2240 Durometer Shore 'A' = 80-90
Dielectric Strength: ASTM D 149-13 1,000 VPM
Water Absorption: 1% Maximum
Overlaps edges

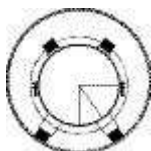
ASSEMBLY HARDWARE

Bolts: 5/16"-18UNC x 2" Long Zinc Plated
Nuts: 5/16" Zinc Plated Hex
Washers: 5/16" Zinc Plated SAE 2330 Flat

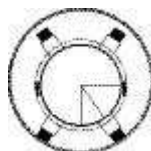
WELDING

All risers shall be welded to the shell by MIG welding prior to coating.

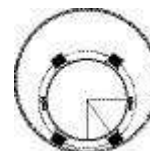
CCI Pipeline Systems certifies the Model CSC8 carbon steel casing spacers are of the highest quality which meet or exceed industry standards.



Centered



Centered Restrained



Clear Bell